

Intel® MPX Runtime Driver Release Notes

Driver Version: 1.0.0.11, Date: 1/28/2016

The Intel® MPX Runtime Driver has been updated to fix a system crash issue seen when installed on systems without MPX support. The new driver will now check for MPX support in the processor and will be prevented from loading if MPX support is not detected.

Intel® MPX Runtime Driver Installation

The Intel® MPX Runtime Driver is only supported on Microsoft® Windows® 10 November 2015 Update or greater running on devices that contain an Intel processor with MPX support. It may appear to install on other versions, but will not be functional and might show an error in Device Manager.

Manual installation is only required if the Intel MPX Runtime device is not visible in Device Manager.

Check that the Intel MPX Runtime Driver is installed on your system by verifying its presence in Device Manager (Figure 1). If it is absent, follow the manual installation steps below.

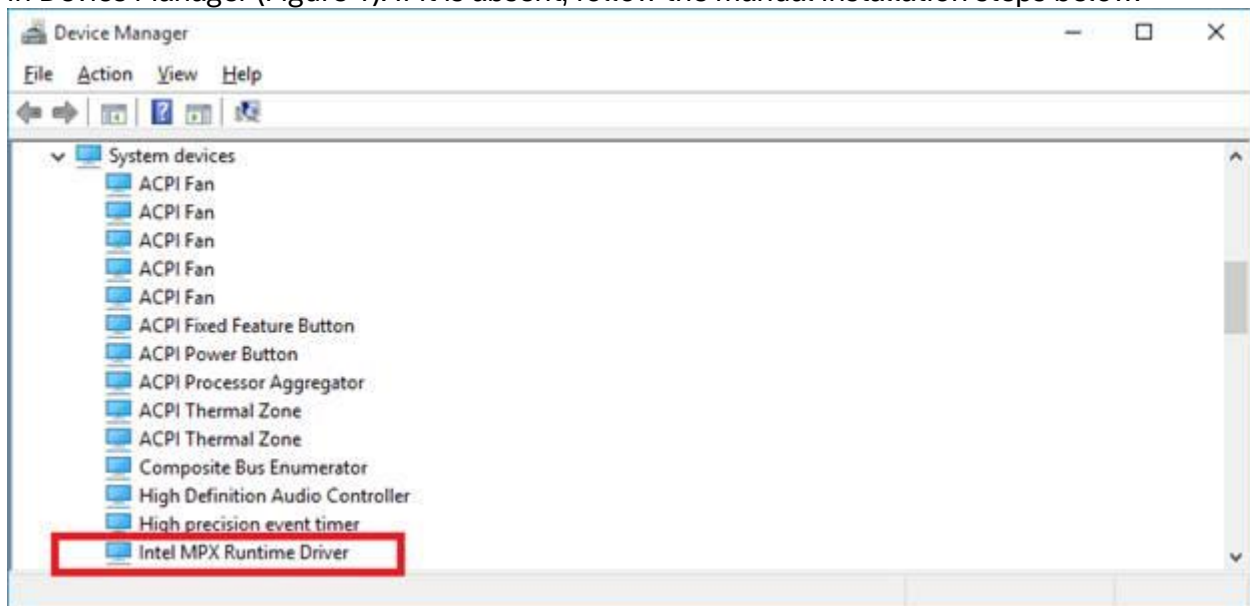


Figure 1. Verify that the Intel MPX Runtime Driver is installed via Device Manager

Steps for manually installing the Intel MPX Runtime driver:

1. Unzip the driver package to a directory on your system
2. Right click on the MpxRuntime.inf file (if the extension is not displayed, it will be the file whose Type is "Setup Information")
3. Select Install from the menu (Figure 2)

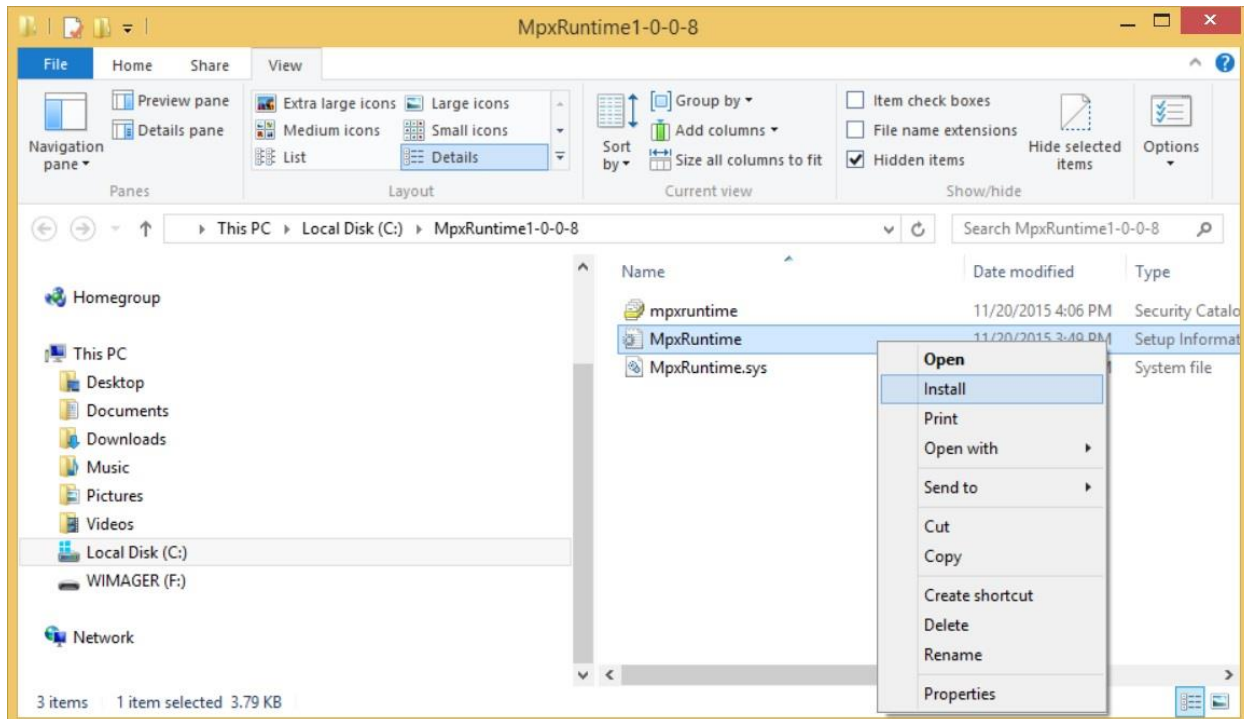


Figure 2. Install the Intel MPX Runtime Driver

References

More information about Intel MPX can be found at <https://software.intel.com/en-us/articles/intel-memory-protection-extensions-enabling-guide>.

Notices

Copyright 2015, Intel Corporation.

This Intel MPX Runtime Driver ("Software") is furnished under license and may only be used or copied in accordance with the terms of that license. No license, express or implied, by estoppel or otherwise, to any intellectual property rights is granted by this document. The Software is subject to change without notice, and should not be construed as a commitment by Intel Corporation to market, license, sell or support any product or technology. Unless otherwise provided for in the license under which this Software is provided, the Software is provided AS IS, with no warranties of any kind, express or implied. Except as expressly permitted by the Software license, neither Intel Corporation nor its suppliers assumes any responsibility or liability for any errors or inaccuracies that may appear herein. Except as expressly permitted by the Software license, no part of the Software may be reproduced,

stored in a retrieval system, transmitted in any form, or distributed by any means without the express written consent of Intel Corporation.

Intel and the Intel logo are trademarks of Intel Corporation in the U.S. and/or other countries.

*Other names and brands may be claimed as the property of others