
User Manual

For the : NA10H

Shuttle®

XPC Installation Guide

Copyright

©2024 by Shuttle® Inc. All Rights Reserved.

No part of this publication may be reproduced, transcribed, stored in a retrieval system, translated into any language, or transmitted in any form or by any means such as electronic, mechanical, magnetic, optical, chemical, photocopy, manual, or otherwise, without prior written permission from Shuttle® Inc.

Other brands and product names used herein are for identification purposes only and may be trademarks of their respective owners.

Disclaimer

Shuttle® Inc. shall not be liable for any incidental or consequential damages resulting from the performance or use of this product.

Shuttle® Inc. makes no representation or warranty regarding the contents of this manual. Information in this manual had been carefully checked for accuracy; however, no guarantee is given as to the correctness of the contents. For continuing product improvement, Shuttle® Inc. reserves the right to revise the manual or make changes to the specifications of this product at any time without notice and obligation to any person or entity regarding such change. The information contained in this manual is provided for general use by customers.

This device complies to Part 15 of the FCC Rules. Operation is subject to the following two conditions:

1. This device may not cause harmful interference.
2. This device must withstand any background interference including those that may cause undesired operation.

Trademarks

Shuttle is a registered trademark of Shuttle Inc.

Intel and Pentium are registered trademarks of Intel Corporation.

PS/2 is a registered trademark of IBM Corporation.

AWARD is a registered trademark of Award Software Inc.

Microsoft and Windows are registered trademarks of Microsoft Corporation.

General Notice

Other brand and product names used herein are for identification purposes only and may be trademarks of their respective owners.

Safety Information

Read the following precautions before setting up a Shuttle XPC.

CAUTION

Incorrectly replacing the battery may damage this computer. Replace only with the same or equivalent as recommended by Shuttle. Disposal of used batteries according to the manufacturer's instructions.

Installation Notices

Do not place this device underneath heavy loads or in an unstable position.

Do not expose this device to high levels of direct sunlight, high-humidity or wet conditions.

Do not use or expose this device around magnetic fields as magnetic interference may affect the performance of the device.

Do not block the air vents to this device or impede the airflow in any way.

TABLE OF CONTENTS

Appendix.....	1
Starting BIOS.....	1
BIOS Setup Menu.....	1
Main Setup.....	3
Advanced.....	4
Security.....	7
Boot.....	9
Save & Exit.....	12

Appendix

Starting BIOS

AMIBIOS has been integrated into many motherboards for over a decade. In the past, people often referred to the AMIBIOS setup menu as BIOS, BIOS setup, or CMOS setup.

American Megatrends refers to this setup as BIOS. Specifically, it is the name of the AMIBIOS BIOS setup utility. This chapter describes the basic navigation of the BIOS setup screens.

Enter the BIOS

To enter the BIOS setup screens, follow the steps below:

Step1. Power on the motherboard.

Step2. Press the <Delete> key on your keyboard when you see the following text prompt: Press DEL to run Setup.

Step3. After you press the <Delete> key, the main BIOS setup menu displays. You can access the other setup screens from the main BIOS setup menu, such as the Chipset and Power menus.



This manual describes the standard look of the BIOS setup screen. The motherboard manufacturer has the ability to change any and all of the settings described in this manual. This means that some of the options described in this manual do not exist in your motherboard's AMIBIOS.



In most cases, the <Delete> key is used to invoke the BIOS setup screen. There are a few cases that other keys are used, such as <F1>, <F2>, and so on.

BIOS Setup Menu

The main BIOS setup menu is the first screen that you can navigate. Each main BIOS setup menu option is described in this user's guide.

The Main BIOS setup menu screen has two main frames. The left frame displays all the options that can be configured. "Grayed-out" options cannot be configured. Options in blue can be.

The right frame displays the key legend. Above the key legend is an area reserved for a text message. When an option is selected in the left frame, it is highlighted in white.

Often a text message will accompany it.



AMIBIOS8 has default text messages built into it. The motherboard manufacture retains the option to include, leave out, or change any of these text messages. They can also add their own text messages. Because of this, many screen shots in this manual are different from your BIOS setup screen.

The BIOS setup/utility uses a key-based navigation system called hot keys. Most of the BIOS setup utility hot keys can be used at any time during the setup navigation process. These keys include <F1>, <F4>, <Enter>, <ESC>, <Arrow> keys, and so on.



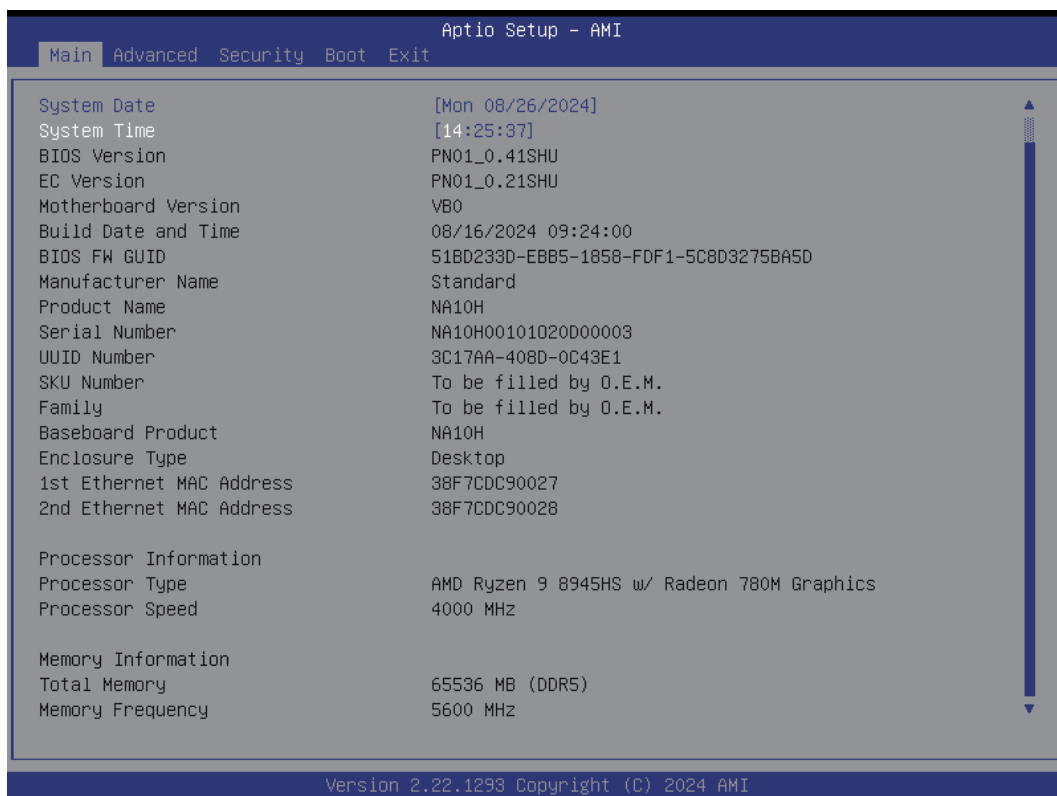
There is a hot key legend located in the right frame on most BIOS setup screens.

Hot Key	Description
→ Left ← Right	The Left and Right <Arrow> keys allow you to select a BIOS setup screen. For example: Main screen, Advanced screen, Chipset screen, and so on.
↑ Up ↓ Down	The Up and Down <Arrow> keys allow you to select an BIOS setup item or sub-screen.
+ - Plus/Minus	The Plus and Minus <Arrow> keys allow you to change the field value of a particular setup item. For example: Date and Time.
Tab	The <Tab> key allows you to select BIOS setup fields.
F1	The <F1> key allows you to display the General Help screen. Press the <F1> key to open the General Help screen.
F4	The <F4> key allows you to save any changes you have made and exit BIOS Setup. Press the <F4> key to save your changes. Press the <Enter> key to save the configuration and exit. You can also use the <Arrow> key to select Cancel and then press the <Enter> key to abort this function and return to the previous screen.
ESC	The <Esc> key allows you to discard any changes you have made and exit the BIOS Setup. Press the <Esc> key to exit the BIOS setup without saving your changes. Press the <Enter> key to discard changes and exit. You can also use the <Arrow> key to select Cancel and then press the <Enter> key to abort this function and return to the previous screen.
Enter	The <Enter> key allows you to display or change the setup option listed for a particular setup item. The <Enter> key can also allow you to display the setup sub-screens.

Main Setup

When you first enter the BIOS Setup Utility, you will enter the Main setup screen.

You can always return to the Main setup screen by selecting the Main tab. There are two Main Setup options. They are described in this section. The Main BIOS Setup screen is shown below.



System Time/System Date

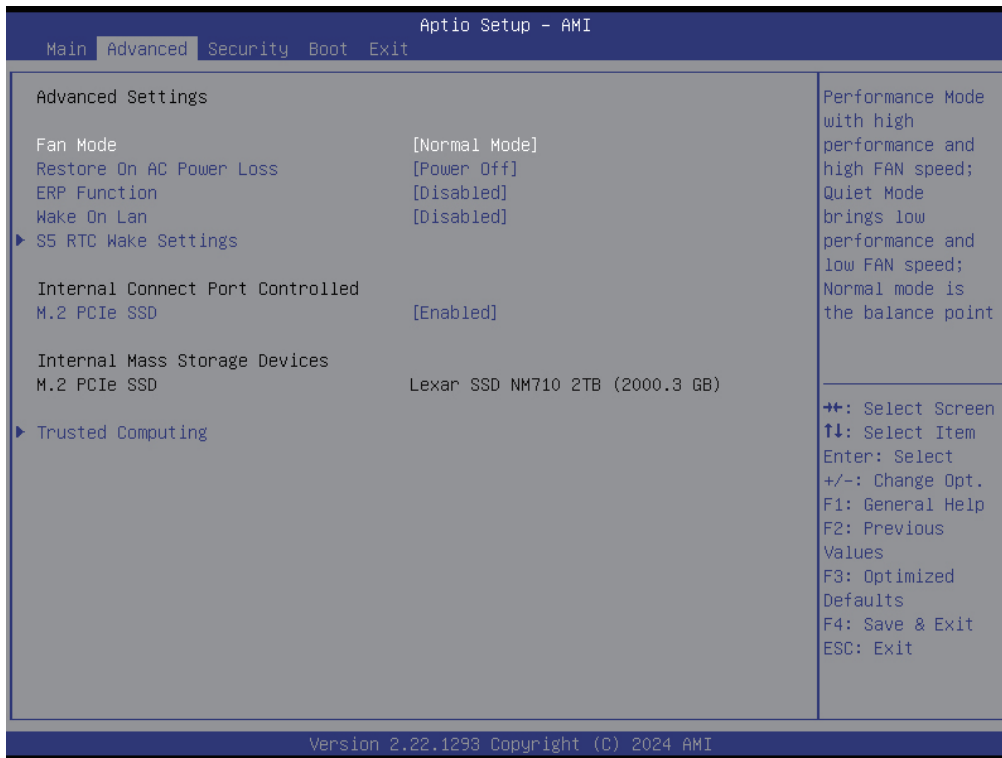
Use this option to change the system time and date. Highlight System Time or System Date using the <Arrow> keys. Enter new values through the keyboard. Press the <Tab> key or the <Arrow> keys to move between fields. The date must be entered in MM/DD/YY format. The time is entered in HH:MM:SS format.



The time is in 24-hour format. For example, 5:30 A.M. appears as 05:30:00, and 5:30 P.M. as 17:30:00.

Advanced

Select the Advanced tab from the BIOS setup screen to enter the Advanced BIOS Setup screen.



Fan Mode

This item allows you to select Fan Mode, Performance Mode with high Performance and high Fan Speed; Silent Mode brings low Performance and low Fan Speed; Normal Mode is the balance point.

- The choice: Performance Mode, Normal Mode, Silent Mode.
(Default is Normal Mode)

Restore On AC Power Loss

This item specifies what state to go when power is re-applied after a power failure (G3 state).

- The choice: Power off, Power on. (Default is Power off)

ERP Function

This item allows you to enable or disable ERP Function, S5 USB Charge / Wake On Lan / S5 RTC Wake Settings no working when ERP Enabled.

- The choice: Enabled, Disabled. (Default is Disabled)

Wake On Lan

This item allows you to enable or disable Wake On Lan function.

- The choice: Enabled, Disabled. (Default is Disabled)

M.2 PCIe SSD

This item allows you to enable or disable M.2 PCIe SSD function.

- The choice: Enabled, Disabled. (Default is Enabled)

S5 RTC Wake Settings

Options are in its sub-menu.

Press <Enter> to enter the sub-menu of detailed options.

This item allows you to select S5 RTC Wake Settings, Enabled / Disabled system wake on alarm event. Select Fixed Time, system will wake on the hr:min:sec specified. Select Dynamic Time, system will wake on the current time and increase minute(s).

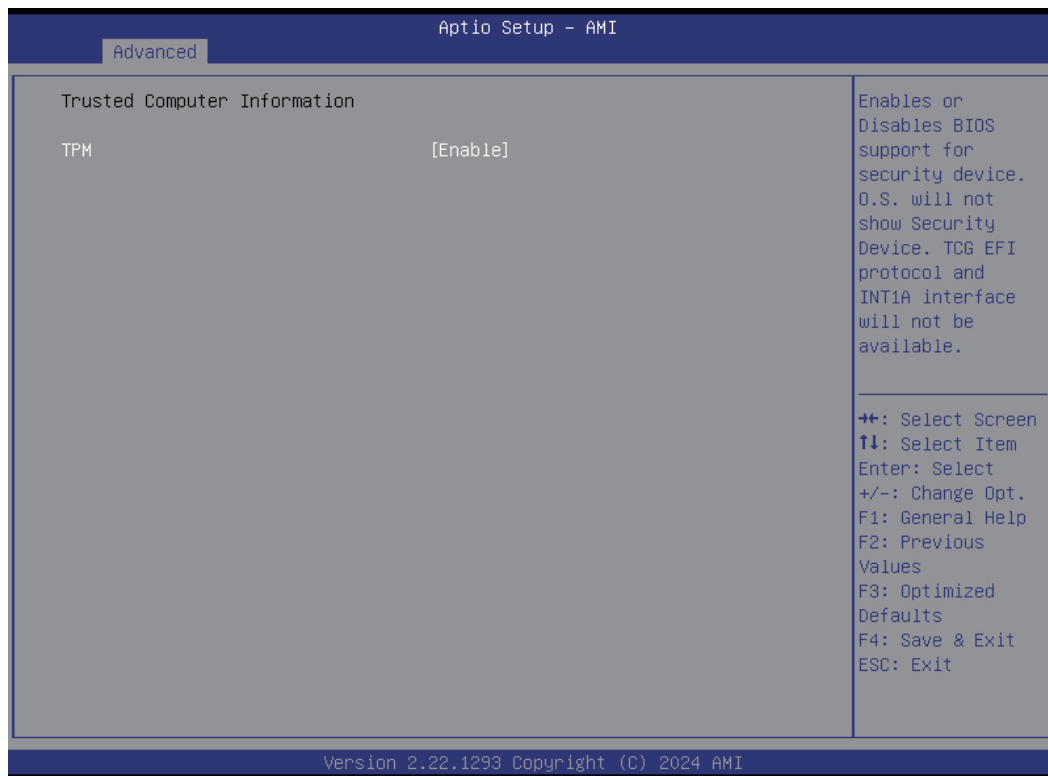
- The choice: Disabled, Fixed Time, Dynamic Time. (Default is Disabled)



Trusted Computing

Option are in its sub-menu.

Press<Enter>to enter the sub-menu of detailed options.



TPM

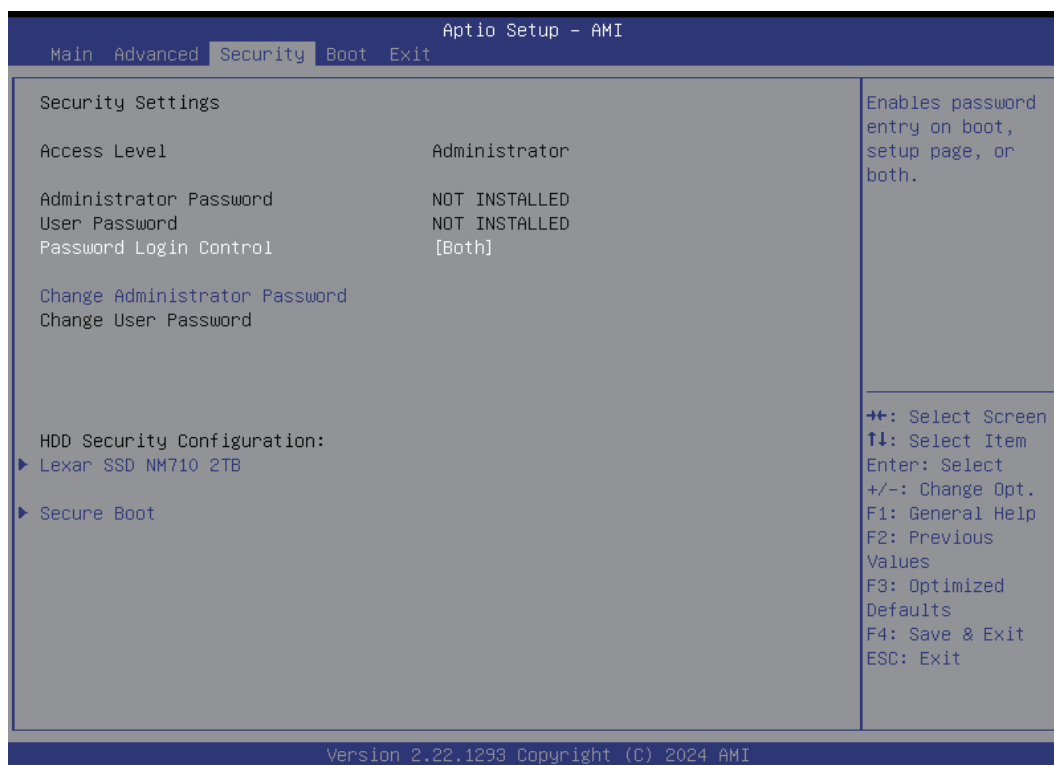
This item allows you to enable or disable bios support for security device.

➤ The choice: Enable, Disable. (Default is Enable)

Security

Select the Security tab from the BIOS setup screen to enter the Security BIOS Setup screen. You can display an Security BIOS Setup option by highlighting it using the <Arrow> keys. All Security BIOS Setup options are described in this section.

The Security Setup screen is shown below. The sub menus are documented on the following pages.



Administrator Password

This item allows you to set Administrator Password.

User Password

This item allows you to set User Password.

Password Login Control

This item allows you to enable password entry on Setup page, Boot or Both.

- ▶ The choice: Setup, Boot, Both. (Default is Both)

Change Administrator Password

This item allows you to set Administrator Password.

Change User Password

This item allows you to set User Password.

HDD Security Configuration

HDD Security Configuration for selected drive.

Secure Boot

Options are in its sub-menu.

Press <Enter> to enter the sub-menu of detailed options.

This item allows you to enable or disable Secure boot function.

➤ The choice: Enabled, Disabled. (Default is Disabled)

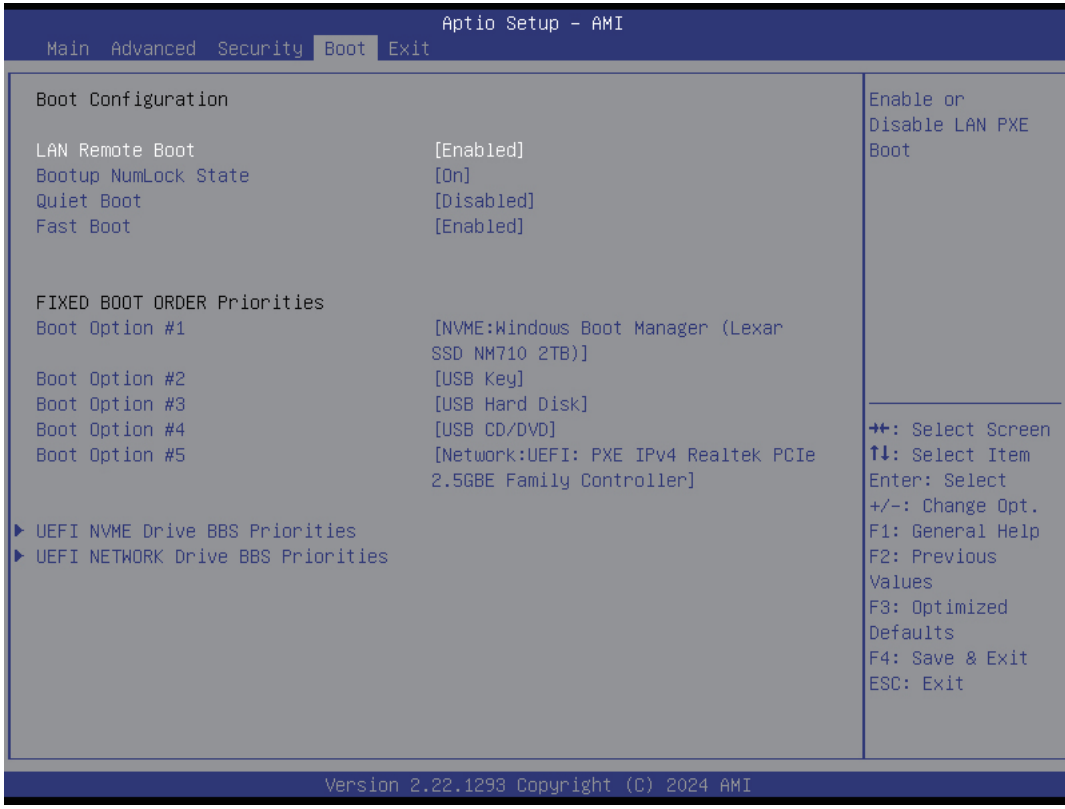


Boot

Select the Boot tab from the BIOS setup screen to enter the Boot BIOS Setup screen. You can select any of the items in the left frame of the screen, such as Boot Settings Configuration, to go to the sub menu for that item.

You can display an Boot BIOS Setup option by highlighting it using the <Arrow> keys. All Boot BIOS Setup options are described in this section.

The Boot BIOS Setup screen is shown below. The sub menus are described on the following pages.



LAN Remote Boot

This item allows you to enable or disable Lan PXE boot.

- The choice: Enabled, Disabled. (Default is Disabled)

Bootup NumLock State

This item allows you to select the keyboard numlock state.

- The choice: On, off.(Default is On)

Quiet Boot

This item allows you to enable or disable Quiet Boot option.

- The choice: Enabled, Disabled. (Default is Disabled)

Fast Boot

This item allows you to enable or disable fast boot function.

- The choice: Enabled, Disabled. (Default is Enabled)

FIXED BOOT ORDER Priorities

This item allows you to adjust boot order priorities .

UEFI NVME Drive BBS Priorities

This item specifies the boot device priority sequence from available UEFI NVME Drivers.

Options are in its sub-menu.

Press <Enter> to enter the sub-menu of detailed options.

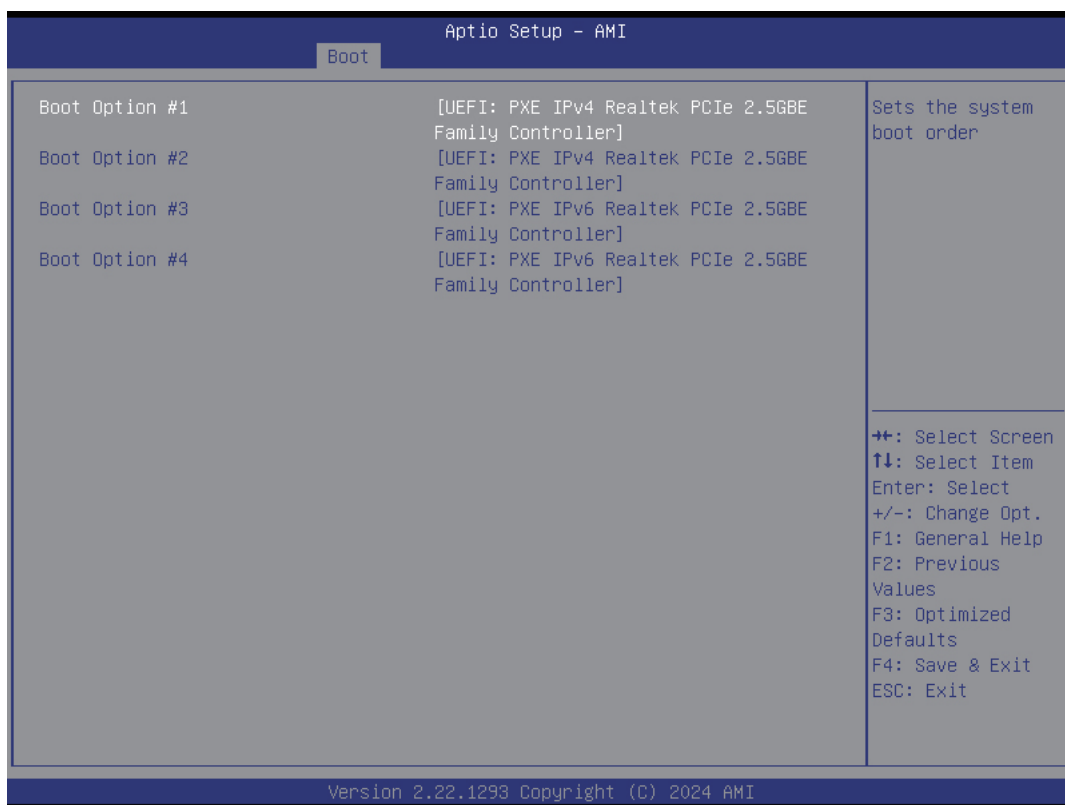


UEFI NETWORK Drive BBS Priorities

This item specifies the boot device priority sequence from available UEFI NETWORK Drives.

Options are in its sub-menu.

Press <Enter> to enter the sub-menu of detailed options.

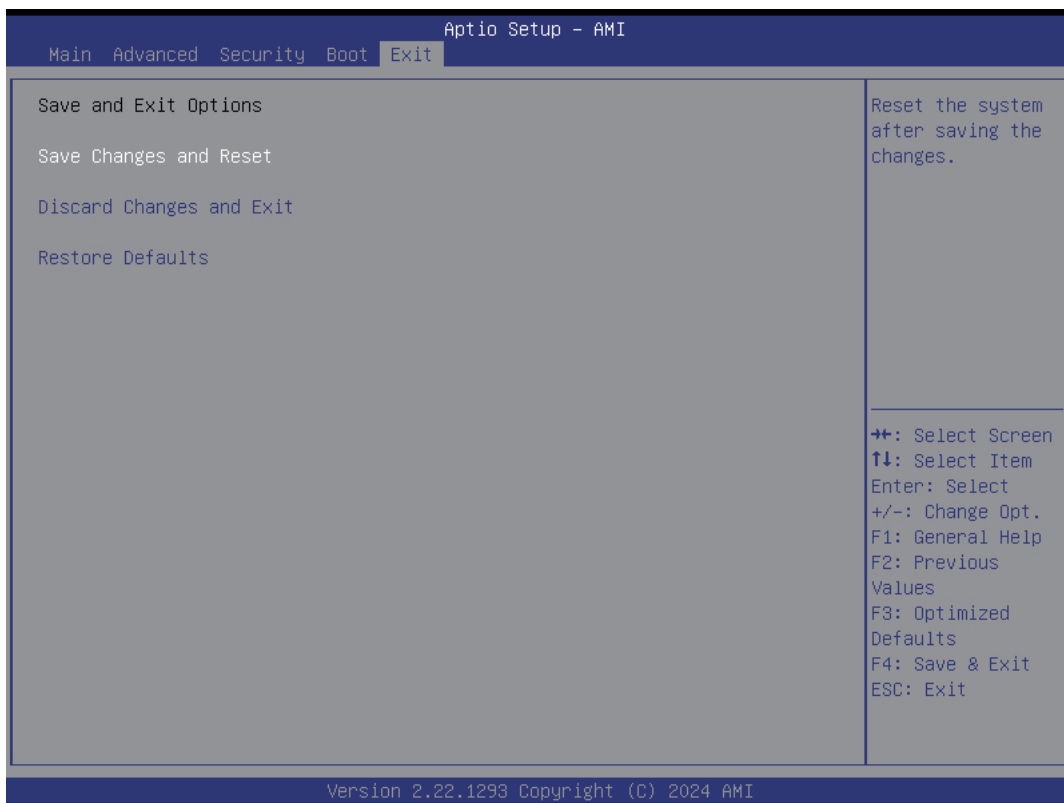


Save & Exit

Select the Exit tab from the BIOS setup screen to enter the Exit BIOS Setup screen.

You can display an Exit BIOS Setup option by highlighting it using the <Arrow> keys. All Exit BIOS Setup options are described in this section.

The Exit BIOS Setup screen is shown below.



Save Changes and Reset

This item reset the system after saving the changes.

Discard Changes and Exit

This item exit BIOS setup without saving any changes.

Restore Defaults

This item Restore/Load default values for all the setup options.

产品中有害物质的名称及含量

产品名称：NA10H

部件名称 及 型号	有害物质					
	铅(Pb)	汞(Hg)	镉(Cd)	六价铬 (Cr(VI))	多溴联苯 (PBB)	多溴二苯醚 (PBDE)
电路板组件	X	O	O	O	O	O
塑料外壳	O	O	O	O	O	O
线材	X	O	O	O	O	O
金属件	X	O	O	O	O	O
风扇	O	O	O	O	O	O
电源	X	O	O	O	O	O

*：电路板组件包括印刷电路板及其构成的零部件，如电阻、电容、集成电路、连接器等

本表格依据 SJ/T 11364 的规定编制

O：表示该有害物质在该部件所以均质材料中的含量均在 GB/T 26572 规定的限量要求下。

X：表示该有害物质至少在该部件的某一均质材料中的含量超过 GB/T 26572 规定的限量要求。

上表中打 "X" 的部件中, 应功能需要, 部分有害物质含量超出 GB/T 26572 规定的限量要求, 但符合欧盟 ROHS 法规要求(属于豁免部分)

Company Address :

5F, NO.30, Lane 76, Rui Guang Rd., Nei-Hu Dist., Taipei, Taiwan.

(臺北市內湖區瑞光路76巷30號5樓/台北市內湖区瑞光路76巷30号5楼)